



*Research article*

## The analytical analysis of nonlinear fractional-order dynamical models

Jiabin Xu<sup>1</sup>, Hassan Khan<sup>2,3,\*</sup>, Rasool Shah<sup>2</sup>, A.A. Alderremy<sup>4</sup>, Shaban Aly<sup>4,5</sup> and Dumitru Baleanu<sup>6,7</sup>

<sup>1</sup> School of Mathematics and Information Sciences, Neijiang Normal University, 641112, Sichuan Province, China

<sup>2</sup> Department of Mathematics Abdul Wali Khan University Mardan (AWKUM), Pakistan

<sup>3</sup> Department of Mathematics, Near East University TRNC, Mersin 10, Turkey

<sup>4</sup> Department of Mathematics, Faculty of Science, King Khalid University, Abha 61413, Kingdom of Saudi Arabia

<sup>5</sup> Department of Mathematics, Faculty of Science, AL-Azhar University, Assiut, 71516, Egypt

<sup>6</sup> Department of Mathematics, Faculty of Arts and Sciences, Cankaya University, 06530 Ankara, Turkey

<sup>7</sup> Institute of Space Sciences, Magurele-Bucharest, Romania

\* **Correspondence:** Email: hassanmath@awkum.edu.pk.

**Abstract:** The present research paper is related to the analytical solution of fractional-order nonlinear Swift-Hohenberg equations using an efficient technique. The presented model is related to the temperature and thermal convection of fluid dynamics which can also be used to explain the formation process in liquid surfaces bounded along a horizontally well-conducting boundary. In this work Laplace Adomian decomposition method is implemented because it require small volume of calculations. Unlike the variational iteration method and Homotopy perturbation method, the suggested technique required no variational parameter and having simple calculation of fractional derivative respectively. Numerical examples verify the validity of the suggested method. It is confirmed that the present method's solutions are in close contact with the solutions of other existing methods. It is also investigated through graphs and tables that the suggested method's solutions are almost identical with different analytical methods.

**Keywords:** Laplace transform; Adomian decomposition method; Swift-Hohenberg equation; Caputo operator

**Mathematics Subject Classification:** 34A34, 35A20, 35A22, 44A10, 33B15

## 1. Introduction

In the last few decades, the researchers have shown significant interest in fractional calculus in different areas, such as edge detection, electromagnetic, engineering, viscoelasticity, electrochemistry, cosmology, turbulence, diffusion, signal processing material science, physics and acoustics. It has been proved by many researchers that the integer-order models are generalized by fractional-order portray the complex phenomena in a very effective approach [1–3]. Various dynamical systems in physics and engineering are also modeled by using fractional-order differential equations. Many researchers have contributed a lot to provide an outstanding history of the derivative of fractional-order, such as Caputo [4], Yin et al. [5], Rashid et al., Arife et al. [6] and Oldham and Spanier [7, 8].

The majority of science problems are nonlinear and it isn't easy to find its analytical solutions. The physical problems are mostly designed by using higher nonlinear partial differential equations (PDEs). It is challenging to find the exact or analytical solutions for such problems. However, in the last several centuries, many scientists have made significant progress and adopted various techniques to solve nonlinear PDEs. Recently in [9–12], Arqub et al. have implemented the Hilbert space reproduction kernel technique along with the iterative computational method to extended the semi-analytical approaches to other time fractional-order PDEs. In [13], the author examined approximate methods for certain groups of Robin time-fractional PDEs by fitting the kernel reproduction algorithm [14]. Sadly, many nonlinear problems can not be solved by analytical techniques. Moreover, the traditional numerical methods have to provide linearization, transformation, discretization and perturbation to solve the nonlinear models [15–20].

In 1980, Adomian developed an effective technique is known as Adomian Decomposition Method (ADM) to solve differential equations describing physical phenomena [21]. Further, ADM is modified by using Laplace transformation. As a result, a new method is developed, known as Laplace-ADM (LADM). LADM possesses the basic properties of both Laplace transformation and ADM. S.A Khuri [22] introduced LADM. This technique works effectively for PDEs of both initial and boundary value problems. LADM is also used in several research article to achieve an analytical solution, such as Whitham-Broer-Kaup equations [23], third-order dispersive fractional PDEs [24], fractional-order telegraph equations [25], fisher's equation [26], time-fractional model of Navier-Stokes equation [27] and Keller-Segel equation [28].

In the current article, the analytical solution of the following Swift-Hohenberg (SH) equation.

$$\frac{\partial^\beta u}{\partial t^\beta} = \gamma u - \left(1 + \frac{\partial^2}{\partial x^2}\right)u - u^3, \quad \gamma \in R, \quad 0 < \beta \leq 1, \quad (1.1)$$

where  $a$  and  $b$  are parameters. This is among the most fundamental equations suggested by Jack Swift and Pierre Hohenberg in 1977, which is related to the temperature and thermal convection of fluid dynamics [29]. A nonlinear parabolic equation is the SH equation, which also explains the formation process in liquid surfaces bounded along a horizontally well-conducting boundary. The broad field of SH equation is used in engineering and science problems from hydrodynamics of fluids to complex patterns [30,31]. Density gradient-driven liquid convection occurs in streams of geophysical fluid in the atmosphere, oceans and mantle of the earth. The mathematical model for the convection of Rayleigh-Benard includes the equations of Navier-Stokes combined with the temperature formula for transport. The S-H equation plays a vital role in the various branches of science, including fluid mechanics, such as laser studies [32] and Taylor-Couette flow [30] nonlinear optics.

The SH equation's solution was analyzed by some researchers using various methods, such as Vishal et al., that used the Homotopy Perturbation Transform Method (HPTM) [33]. The Homotopy Analysis Method (HAM) [34], Merdan, who used the method of variational iteration utilizing the Riemann-Liouville derivative [35], Khan et al., who used the differential transform method [36], Prakasha et al., applied is residual power series method and others [37–40].

In this research work, the analytical solution of SH equation is investigated by using Laplace Adomian decomposition method. In the prior literature, the solution of SH equation was handled by using Variational iteration method and Homotopy analysis method. It is observed that the proposed method is simple and straightforward as compared to other existing techniques. Moreover, the suggested method has greater accuracy and requires fewer calculations than other methods. The method is applied easily to achieve the solutions of fractional problems. The representation has confirmed the closed relation between the exact and obtained results. The fractional-order solutions are convergent to the solution of the integer-order problem.

## 2. Definitions and preliminaries concepts

### 2.1. Definition

The Caputo definition of the fractional derivative of order  $\beta$  is described as [1–3, 7]

$$\frac{\partial^\beta g(t)}{\partial t^\beta} = \frac{1}{\Gamma(m-\beta)} \int_0^x (x-t)^{m-\beta-1} g^{(m)}(t) dt, \quad \text{for } m-1 < \beta \leq m, \quad m \in \mathbb{N}.$$

Hence, we have the following properties [1–3, 7]

$$\begin{aligned} J^\beta J^\alpha g(t) &= J^{\beta+\alpha}, \quad \alpha, \gamma \geq 0. \\ J^\beta t^\gamma &= \frac{\Gamma(\gamma+1)}{\Gamma(\beta+\gamma+1)} t^{\beta+\gamma}, \quad \gamma > -1, \quad t > 0. \\ J^\beta D^\beta g(t) &= g(t) - \sum_{k=0}^{m-1} g^{(k)}(0^+) \frac{t^k}{k!}, \quad t > 0, \quad m-1 < \beta \leq m. \end{aligned}$$

### 2.2. Definition

The Laplace transform of  $G(s)$  of  $g(t)$  is defined by [22]

$$G(s) = \mathcal{L}[g(t)] = \int_0^\infty e^{-st} g(t) dt.$$

### 2.3. Definition

The Laplace transform of fractional derivative is [22]

$$\mathcal{L}(D_t^\beta g(t)) = s^\beta G(s) - \sum_{k=0}^{m-1} s^{\beta-1-k} g^{(k)}(0), \quad m-1 < \beta < m.$$

### 3. LADM idea for FPDEs

In this section, LADM is implemented to solve FPDEs [22].  
For this first consider the following FPDE, that is

$$\frac{\partial^\beta u}{\partial t^\beta} + Lu(x, t) + Nu(x, t) = q(x, t), \quad x, t \geq 0, \quad 0 < \beta \leq 1, \quad (3.1)$$

with initial condition

$$u(x, 0) = k(x). \quad (3.2)$$

The fractional derivative in equation (3.1) is expressed in Caputo sense. The linear and nonlinear terms are denoted by L and N respectively. The  $q$  is the sources term.

Taking both sides Laplace transformation of Eq (3.1),

$$\begin{aligned} s^\beta \mathcal{L}[u(x, t)] - s^{\beta-1} u(x, 0) &= \mathcal{L}[q(x, t)] - \mathcal{L}[Lu(x, t) + Nu(x, t)], \\ \mathcal{L}[u(x, t)] &= \frac{k(x)}{s} + \frac{1}{s^\beta} \mathcal{L}[q(x, t)] - \frac{1}{s^\beta} \mathcal{L}[Lu(x, t) + Nu(x, t)]. \end{aligned} \quad (3.3)$$

The LADM solution is [22]

$$u(x, t) = \sum_{j=0}^{\infty} u_j(x, t), \quad (3.4)$$

The nonlinear term in the problem is expressed as

$$Nu(x, t) = \sum_{j=0}^{\infty} A_j, \quad (3.5)$$

where

$$A_j = \frac{1}{j!} \left[ \frac{d^j}{d\lambda^j} \left[ N \sum_{j=0}^{\infty} (\lambda^j u_j) \right] \right]_{\lambda=0}, \quad j = 0, 1, 2, \dots, \quad (3.6)$$

is called Adomian polynomials.

substitution (3.4) and (3.5) in Eq (3.3), we get

$$\mathcal{L} \left[ \sum_{j=0}^{\infty} u_j(x, t) \right] = \frac{k(x)}{s} + \frac{1}{s^\beta} \mathcal{L}[q(x, t)] - \frac{1}{s^\beta} \mathcal{L} \left[ L \sum_{j=0}^{\infty} u_j(x, t) + \sum_{j=0}^{\infty} A_j \right]. \quad (3.7)$$

Applying the decomposition method, we get

$$\begin{aligned} \mathcal{L}[u(x, t)] &= \frac{k(x)}{s} + \frac{1}{s^\beta} \mathcal{L}[q(x, t)], \\ \mathcal{L}[u_1(x, t)] &= -\frac{1}{s^\beta} \mathcal{L}[Lu_0(x, t) + A_0]. \end{aligned}$$

In general, it can be written as

$$\mathcal{L}[u_{j+1}(x, t)] = -\frac{1}{s^\beta} \mathcal{L}[Lu_j(x, t) + A_j], \quad j \geq 1. \quad (3.8)$$

Using inverse Laplace transform to Eq (3.8)

$$\begin{aligned} u_0(x, t) &= k(x, t) \\ u_{j+1}(x, t) &= -\mathcal{L}^{-1} \left[ \frac{1}{s^\beta} \mathcal{L}[Lu_j(x, t) + A_j] \right]. \end{aligned} \quad (3.9)$$

## 4. Numerical examples

### 4.1. Example

Consider the fractional equation SH with the form dispersion [33, 34, 39]

$$\frac{\partial^\beta u(x, t)}{\partial t^\beta} + \frac{\partial^4 u(x, t)}{\partial x^4} + 2 \frac{\partial^2 u(x, t)}{\partial x^2} + (1 - a)u(x, t) + u^3(x, t) = 0, \quad 0 < \beta \leq 1, \quad (4.1)$$

with initial condition

$$u(x, 0) = \frac{1}{10} \sin\left(\frac{\pi x}{l}\right) \quad (4.2)$$

Taking Laplace transform of Eq (4.1),

$$\begin{aligned} \mathcal{L}\left[\frac{\partial^\beta u(x, t)}{\partial t^\beta}\right] &= -\mathcal{L}\left[\frac{\partial^4 u(x, t)}{\partial x^4} + 2 \frac{\partial^2 u(x, t)}{\partial x^2} + (1 - a)u(x, t) + u^3(x, t)\right], \\ s^\beta \mathcal{L}[u(x, t)] - s^{\beta-1} [u(x, 0)] &= -\mathcal{L}\left[\frac{\partial^4 u(x, t)}{\partial x^4} + 2 \frac{\partial^2 u(x, t)}{\partial x^2} + (1 - a)u(x, t) + u^3(x, t)\right]. \end{aligned}$$

Using inverse transformation

$$\begin{aligned} u(x, t) &= \mathcal{L}^{-1} \left[ \frac{u(x, 0)}{s} - \frac{1}{s^\beta} \mathcal{L} \left\{ \frac{\partial^4 u(x, t)}{\partial x^4} + 2 \frac{\partial^2 u(x, t)}{\partial x^2} + (1 - a)u(x, t) + u^3(x, t) \right\} \right], \\ u(x, t) &= \frac{1}{10} \sin\left(\frac{\pi x}{l}\right) - \mathcal{L}^{-1} \left[ \frac{1}{s^\beta} \mathcal{L} \left\{ \frac{\partial^4 u(x, t)}{\partial x^4} + 2 \frac{\partial^2 u(x, t)}{\partial x^2} + (1 - a)u(x, t) + u^3(x, t) \right\} \right], \end{aligned}$$

Using ADM procedure, we get

$$\begin{aligned} \sum_{j=0}^{\infty} u_j(x, t) &= \frac{1}{10} \sin\left(\frac{\pi x}{l}\right) - \mathcal{L}^{-1} \left[ \frac{1}{s^\beta} \mathcal{L} \left\{ \sum_{j=0}^{\infty} \frac{\partial^4 u_j(x, t)}{\partial x^4} + 2 \sum_{j=0}^{\infty} \frac{\partial^2 u_j(x, t)}{\partial x^2} \right. \right. \\ &\quad \left. \left. + (1 - a) \sum_{j=0}^{\infty} u_j(x, t) + \sum_{j=0}^{\infty} A_j \right\} \right], \\ u_0(x, t) &= \frac{1}{10} \sin\left(\frac{\pi x}{l}\right), \end{aligned} \quad (4.3)$$

$$\sum_{j=1}^{\infty} u_j(x, t) = -\mathcal{L}^{-1} \left[ \frac{1}{s^\beta} \mathcal{L} \left\{ \sum_{j=1}^{\infty} \frac{\partial^4 u_{j-1}(x, t)}{\partial x^4} + 2 \sum_{j=1}^{\infty} \frac{\partial^2 u_{j-1}(x, t)}{\partial x^2} + (1-a) \sum_{j=1}^{\infty} u_{j-1}(x, t) + \sum_{j=1}^{\infty} A_{j-1} \right\} \right], \quad (4.4)$$

where the nonlinear terms in the above equations are represented by Adomian polynomials  $A_j$  [41]. Whose components are defined as

$$A_j = \frac{1}{j!} \left[ \frac{d^j}{d\lambda^j} \left\{ N \left( \sum_{j=0}^{\infty} (\lambda^j u_j) \right) \right\} \right]_{\lambda=0}, \quad j = 0, 1, 2, \dots,$$

Here the nonlinear term is

$$N(u) = u^3 \quad (4.5)$$

For  $j = 0$

$$A_0 = N(\lambda^0 u_0),$$

$$A_0 = N(u_0).$$

Using Eq (4.15)

$$A_0 = u_0^3,$$

$j = 1$

$$A_1 = \frac{1}{1!} \left[ \frac{d}{d\lambda} \left\{ N(\lambda^0 u_0 + \lambda^1 u_1) \right\} \right]_{\lambda=0},$$

$$A_1 = \left[ \frac{d}{d\lambda} \left\{ N(u_0 + \lambda u_1) \right\} \right]_{\lambda=0},$$

$$A_1 = \left[ \frac{d}{d\lambda} \left\{ (u_0 + \lambda u_1)^3 \right\} \right]_{\lambda=0},$$

$$A_1 = \left[ 3(u_0 + \lambda u_1)^2 u_1 \right]_{\lambda=0},$$

$$A_1 = 3u_0^2 u_1,$$

Similarly

$$A_2 = 3u_0^2 u_2 + 3u_0 u_1^2.$$

For  $j = 1$

$$u_1(x, t) = -\mathcal{L}^{-1} \left[ \frac{1}{s^\beta} \mathcal{L} \left\{ \frac{\partial^4 u_0(x, t)}{\partial x^4} + 2 \frac{\partial^2 u_0(x, t)}{\partial x^2} + (1-a) u_0(x, t) + u_0^3(x, t) \right\} \right],$$

$$u_1(x, t) = \left[ \frac{\sin\left(\frac{\pi x}{l}\right)}{1000l^4} \left\{ 100\pi^4 - 200\pi^2 l^2 + 101l^4 - 100l^4 a - l^4 \cos^2\left(\frac{\pi x}{l}\right) \right\} \right] \frac{t^\beta}{\Gamma(\beta + 1)}.$$

For  $j = 2$

$$u_2(x, t) = -\mathcal{L}^{-1} \left[ \frac{1}{s^\beta} \mathcal{L} \left\{ \frac{\partial^4 u_1(x, t)}{\partial x^4} + 2 \frac{\partial^2 u_1(x, t)}{\partial x^2} + (1 - a)u_1(x, t) + 3u_0^2(x, t)u_1(x, t) \right\} \right],$$

$$u_2(x, t) = \frac{1}{100000l^8} \left[ \sin\left(\frac{\pi x}{l}\right) \left\{ -8400 \cos^2\left(\frac{\pi x}{l}\right) \pi^4 l^4 + 2400 \cos^2\left(\frac{\pi x}{l}\right) \pi^2 l^6 - 20400l^8 a \right. \right. \\ \left. \left. + 10403l^8 - 406l^8 \cos^2\left(\frac{\pi x}{l}\right) + 10000l^8 a^2 + 3l^8 \cos^4\left(\frac{\pi x}{l}\right) + 10000\pi^8 - 40000\pi^6 l^2 \right. \right. \\ \left. \left. + 62400\pi^4 l^4 - 41200\pi^2 l^6 - 20000\pi^4 l^4 a + 40000\pi^2 l^6 a + 400l^8 a \cos^2\left(\frac{\pi x}{l}\right) \right\} \right] \frac{t^{2\beta}}{\Gamma(2\beta + 1)},$$

The LADM solution for example 1 is

$$u(x, t) = u_0(x, t) + u_1(x, t) + u_2(x, t) + \dots,$$

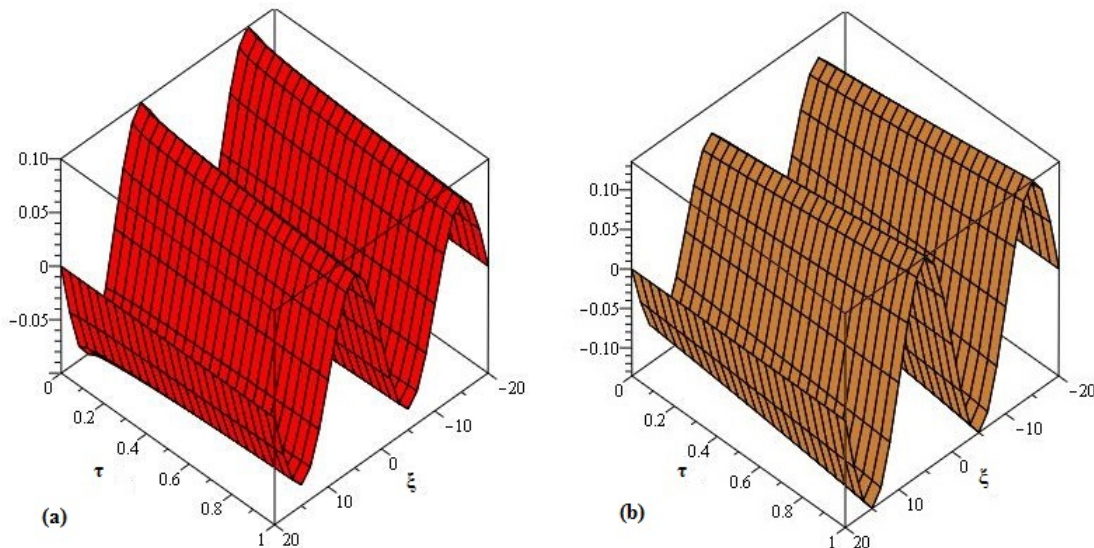
$$u(x, t) = \frac{1}{10} \sin\left(\frac{\pi x}{l}\right) + \left[ \frac{\sin\left(\frac{\pi x}{l}\right)}{1000l^4} \left\{ 100\pi^4 - 200\pi^2 l^2 + 101l^4 - 100l^4 a - l^4 \cos^2\left(\frac{\pi x}{l}\right) \right\} \right] \times \\ \frac{t^\beta}{\Gamma(\beta + 1)} + \frac{1}{100000l^8} \left[ \sin\left(\frac{\pi x}{l}\right) \left\{ -8400 \cos^2\left(\frac{\pi x}{l}\right) \pi^4 l^4 + 2400 \cos^2\left(\frac{\pi x}{l}\right) \pi^2 l^6 \right. \right. \\ \left. \left. - 20400l^8 a + 10403l^8 - 406l^8 \cos^2\left(\frac{\pi x}{l}\right) + 10000l^8 a^2 + 3l^8 \cos^4\left(\frac{\pi x}{l}\right) + 10000\pi^8 \right. \right. \\ \left. \left. - 40000\pi^6 l^2 + 62400\pi^4 l^4 - 41200\pi^2 l^6 - 20000\pi^4 l^4 a + 40000\pi^2 l^6 a + 400l^8 a \cos^2\left(\frac{\pi x}{l}\right) \right\} \right] \\ \frac{t^{2\beta}}{\Gamma(2\beta + 1)} + \dots,$$

In Table 1, the VIM and LADM solutions of example 9.1 are compared at different fractional orders  $\beta = 0.5$  and 1. The corresponding results are seems to be very similar and confirmed the validity of the present technique.

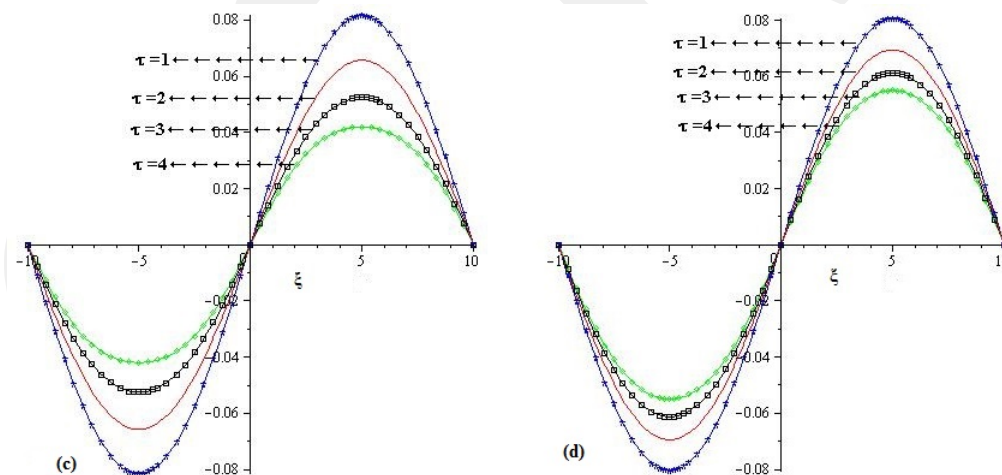
**Table 1.** Comparison of LADM and VIM [35] of different fractional-order of  $\beta$ ,  $l = 3$  and  $t = 1$ .

$x$	VIM( $\beta = 0.5$ )	LADM( $\beta = 0.5$ )	VIM( $\beta = 1$ )	LADM( $\beta = 1$ )
0.00	0.00000000	0.00000000	0.00000000	0.00000000
0.25	0.03085341	0.03085341	0.0347097	0.0347097
0.50	0.06652018	0.06652018	0.0704722	0.0704722
0.75	0.10743665	0.10743665	0.1062671	0.1062671
1.00	0.14795188	0.14795188	0.1382405	0.1382405
1.25	0.17838674	0.17838674	0.1607941	0.1607941
1.50	0.18974562	0.18974562	0.1689702	0.1689702
1.75	0.17838674	0.17838674	0.1607941	0.1607941
2.00	0.14795188	0.14795188	0.1382405	0.1382405

In Figure 1, the LADM solutions at fractional orders  $\beta = 0.75$  and 1 are plotted. The graph (a) represent the solution of example 1 at  $\beta = 1$  while graph (b) is the plot of LADM solution at  $\beta = 0.75$ . In Figure 2, the LADM solutions at fractional orders  $\beta = 0.75$  and 1 are plotted at  $t = 1, 2, 3$  and 4 in the domain  $-10 < x < 10$ . The graphs (c) and (d) of Figure 2 represent the LADM solutions at fractional orders  $\beta = 1$  and 0.75 respectively.



**Figure 1.** LADM solution for example 1 of  $a = 1, l = 10$  at (a)  $\beta = 1$  and (b)  $\beta = 0.75$ .



**Figure 2.** LADM solution for example 1 of  $a = 1, l = 10, -10 < x \leq 10$  and  $t = 1$  at (a)  $\beta = 1$  and (b)  $\beta = 0.75$ .

#### 4.2. Example

Consider the fractional SH equation with dispersion of the form [33, 34, 39]

$$\frac{\partial^\beta u(x, t)}{\partial t^\beta} + \frac{\partial^4 u(x, t)}{\partial x^4} + 2 \frac{\partial^2 u(x, t)}{\partial x^2} - a \frac{\partial^3 u(x, t)}{\partial x^3} - bu(x, t) - 2u^2(x, t) + u^3(x, t) = 0, \quad 0 < \beta \leq 1, \quad (4.6)$$

with initial condition

$$u(x, 0) = \frac{1}{10} \sin\left(\frac{\pi x}{l}\right). \quad (4.7)$$

Taking Laplace transform of Eq (4.6),

$$\begin{aligned} \mathcal{L}\left[\frac{\partial^\beta u(x, t)}{\partial t^\beta}\right] &= -\mathcal{L}\left[\frac{\partial^4 u(x, t)}{\partial x^4} + 2\frac{\partial^2 u(x, t)}{\partial x^2} - a\frac{\partial^3 u(x, t)}{\partial x^3} - bu(x, t) - 2u^2(x, t) + u^3(x, t)\right], \\ s^\beta \mathcal{L}[u(x, t)] - s^{\beta-1}[u(x, 0)] &= -\mathcal{L}\left[\frac{\partial^4 u(x, t)}{\partial x^4} + 2\frac{\partial^2 u(x, t)}{\partial x^2} - a\frac{\partial^3 u(x, t)}{\partial x^3} - bu(x, t) - 2u^2(x, t) \right. \\ &\quad \left. + u^3(x, t)\right]. \end{aligned}$$

Using inverse transformation

$$\begin{aligned} u(x, t) &= \mathcal{L}^{-1}\left[\frac{u(x, 0)}{s} - \frac{1}{s^\beta} \mathcal{L}\left\{\frac{\partial^4 u(x, t)}{\partial x^4} + 2\frac{\partial^2 u(x, t)}{\partial x^2} - a\frac{\partial^3 u(x, t)}{\partial x^3} - bu(x, t) - 2u^2(x, t) \right. \right. \\ &\quad \left. \left. + u^3(x, t)\right\}\right], \\ u(x, t) &= \frac{1}{10} \sin\left(\frac{\pi x}{l}\right) - \mathcal{L}^{-1}\left[\frac{1}{s^\beta} \mathcal{L}\left\{\frac{\partial^4 u(x, t)}{\partial x^4} + 2\frac{\partial^2 u(x, t)}{\partial x^2} - a\frac{\partial^3 u(x, t)}{\partial x^3} - bu(x, t) - 2u^2(x, t) \right. \right. \\ &\quad \left. \left. + u^3(x, t)\right\}\right], \end{aligned}$$

Using ADM procedure, we get

$$\begin{aligned} \sum_{j=0}^{\infty} u_j(x, t) &= \frac{1}{10} \sin\left(\frac{\pi x}{l}\right) - \mathcal{L}^{-1}\left[\frac{1}{s^\beta} \mathcal{L}\left\{\sum_{j=0}^{\infty} \frac{\partial^4 u_j(x, t)}{\partial x^4} + 2\sum_{j=0}^{\infty} \frac{\partial^2 u_j(x, t)}{\partial x^2} - a\sum_{j=0}^{\infty} \frac{\partial^3 u_j(x, t)}{\partial x^3} \right. \right. \\ &\quad \left. \left. - b\sum_{j=0}^{\infty} u_j(x, t) - 2\sum_{j=0}^{\infty} A_j + \sum_{j=0}^{\infty} B_j\right\}\right], \\ u_0(x, t) &= \frac{1}{10} \sin\left(\frac{\pi x}{l}\right), \end{aligned} \quad (4.8)$$

$$\begin{aligned} \sum_{j=1}^{\infty} u_j(x, t) &= -\mathcal{L}^{-1}\left[\frac{1}{s^\beta} \mathcal{L}\left\{\sum_{j=1}^{\infty} \frac{\partial^4 u_{j-1}(x, t)}{\partial x^4} + 2\sum_{j=1}^{\infty} \frac{\partial^2 u_{j-1}(x, t)}{\partial x^2} - a\sum_{j=1}^{\infty} \frac{\partial^3 u_{j-1}(x, t)}{\partial x^3} \right. \right. \\ &\quad \left. \left. - b\sum_{j=1}^{\infty} u_{j-1}(x, t) - 2\sum_{j=1}^{\infty} A_{j-1} + \sum_{j=1}^{\infty} B_{j-1}\right\}\right], \end{aligned} \quad (4.9)$$

where the nonlinear terms in the above equations are represented by Adomian polynomials  $A_j$  and  $B_j$  [41]. Whose components are defined as

$$A_j = \frac{1}{j!} \left[ \frac{d^j}{d\lambda^j} \left\{ N \left( \sum_{j=0}^{\infty} (\lambda^j u_j) \right) \right\} \right]_{\lambda=0}, \quad B_j = \frac{1}{j!} \left[ \frac{d^j}{d\lambda^j} \left\{ N \left( \sum_{j=0}^{\infty} (\lambda^j u_j) \right) \right\} \right]_{\lambda=0}, \quad j = 0, 1, 2, \dots,$$

Here the nonlinear term is

$$N_1(u) = u^2, \quad N_2(u) = u^3. \quad (4.10)$$

For  $j = 0$

$$A_0 = N(\lambda^0 u_0), \quad B_0 = N(\lambda^0 u_0),$$

$$A_0 = N(u_0), \quad B_0 = N(u_0),$$

$$A_0 = u_0^2, \quad B_0 = u_0^3,$$

$j = 1$

$$A_1 = \frac{1}{1!} \left[ \frac{d}{d\lambda} \{N(\lambda^0 u_0 + \lambda^1 u_1)\} \right]_{\lambda=0}, \quad B_1 = \frac{1}{1!} \left[ \frac{d}{d\lambda} \{N_1(\lambda^0 u_0 + \lambda^1 u_1)\} \right]_{\lambda=0},$$

$$A_1 = \left[ \frac{d}{d\lambda} \{N(u_0 + \lambda u_1)\} \right]_{\lambda=0}, \quad B_1 = \left[ \frac{d}{d\lambda} \{N_1(u_0 + \lambda u_1)\} \right]_{\lambda=0},$$

$$A_1 = \left[ \frac{d}{d\lambda} \{(u_0 + \lambda u_1)^2\} \right]_{\lambda=0}, \quad B_1 = \left[ \frac{d}{d\lambda} \{(u_0 + \lambda u_1)^3\} \right]_{\lambda=0},$$

$$A_1 = [2(u_0 + \lambda u_1)^2 u_1]_{\lambda=0}, \quad B_1 = [3(u_0 + \lambda u_1)^2 u_1]_{\lambda=0},$$

$$A_1 = 2u_0 u_1, \quad B_1 = 3u_0^2 u_1.$$

Similarly

$$A_2 = 2u_0 u_2 + 2u_0 u_1, \quad B_2 = 3u_0^2 u_2 + 3u_0 u_1^2.$$

For  $j = 1$

$$u_1(x, t) = -\mathcal{L}^{-1} \left[ \frac{1}{s^\beta} \mathcal{L} \left\{ \frac{\partial^4 u_0(x, t)}{\partial x^4} + 2 \frac{\partial^2 u_0(x, t)}{\partial x^2} - a \frac{\partial^3 u_0(x, t)}{\partial x^3} - b u_0(x, t) - 2u_0^2(x, t) + u_0^3(x, t) \right\} \right],$$

$$u_1(x, t) = \left[ -\frac{\sin\left(\frac{\pi x}{l}\right) \pi^4}{10l^4} + \frac{\sin\left(\frac{\pi x}{l}\right) \pi^2}{10l^2} - \frac{a \cos\left(\frac{\pi x}{l}\right) \pi^3}{10l^3} + \frac{b \sin\left(\frac{\pi x}{l}\right)}{10l} + \frac{\sin^2\left(\frac{\pi x}{l}\right)}{50l} - \frac{\sin^3\left(\frac{\pi x}{l}\right)}{10000} \right] \frac{t^\beta}{\Gamma(\beta + 1)}.$$

For  $j = 2$

$$u_2(x, t) = -\mathcal{L}^{-1} \left[ \frac{1}{s^\beta} \mathcal{L} \left\{ \frac{\partial^4 u_1(x, t)}{\partial x^4} + 2 \frac{\partial^2 u_1(x, t)}{\partial x^2} - a \frac{\partial^3 u_1(x, t)}{\partial x^3} - b u_1(x, t) - 4u_0(x, t) u_1(x, t) + 3u_0^2(x, t) u_1(x, t) \right\} \right],$$

$$\begin{aligned}
u_2(x, t) = & \frac{1}{100000l^8} \left[ -600\pi^2 l^6 \sin\left(\frac{\pi x}{l}\right) - 10000a^2 \pi^6 l^2 \sin\left(\frac{\pi x}{l}\right) - 3000a\pi^3 l^5 \cos^3\left(\frac{\pi x}{l}\right) \right. \\
& - 8400\pi^4 l^4 \cos^2\left(\frac{\pi x}{l}\right) \sin\left(\frac{\pi x}{l}\right) - 20000b\pi^4 l^4 \sin\left(\frac{\pi x}{l}\right) + 20000b\pi^2 l^6 \sin\left(\frac{\pi x}{l}\right) \\
& + 20000a\pi^7 l \cos\left(\frac{\pi x}{l}\right) - 20000\pi^5 l^3 \cos\left(\frac{\pi x}{l}\right) + 1200\pi^2 l^6 \sin\left(\frac{\pi x}{l}\right) \cos^2\left(\frac{\pi x}{l}\right) \\
& - 20000a\pi^3 l^5 b \cos\left(\frac{\pi x}{l}\right) - 20000a\pi^3 l^5 \cos\left(\frac{\pi x}{l}\right) \sin\left(\frac{\pi x}{l}\right) + 10000\pi^8 \sin\left(\frac{\pi x}{l}\right) \\
& - 100l^8 - 20000\pi^6 l^2 \sin\left(\frac{\pi x}{l}\right) + 36000\pi^4 l^4 \cos^2\left(\frac{\pi x}{l}\right) + 12400\pi^4 l^4 \sin\left(\frac{\pi x}{l}\right) \\
& - 12000\pi^2 l^6 \cos^2\left(\frac{\pi x}{l}\right) + 10000b^2 l^8 \sin\left(\frac{\pi x}{l}\right) + 2400a\pi^3 l^5 \cos\left(\frac{\pi x}{l}\right) + 803l^8 \sin\left(\frac{\pi x}{l}\right) \\
& - 20000\pi^4 l^4 + 6000bl^8 - 400bl^8 \sin\left(\frac{\pi x}{l}\right) + 8000\pi^2 l^6 + 200l^8 \cos^2\left(\frac{\pi x}{l}\right) \\
& - 100l^8 \cos^4\left(\frac{\pi x}{l}\right) - 6000bl^8 \cos^2\left(\frac{\pi x}{l}\right) - 806l^8 \sin\left(\frac{\pi x}{l}\right) \cos^2\left(\frac{\pi x}{l}\right) \\
& \left. + 3l^8 \sin\left(\frac{\pi x}{l}\right) \cos^4\left(\frac{\pi x}{l}\right) + 400bl^8 \sin\left(\frac{\pi x}{l}\right) \cos^2\left(\frac{\pi x}{l}\right) \right] \frac{t^{2\beta}}{\Gamma(2\beta + 1)}.
\end{aligned}$$

The LADM solution for example 2 is

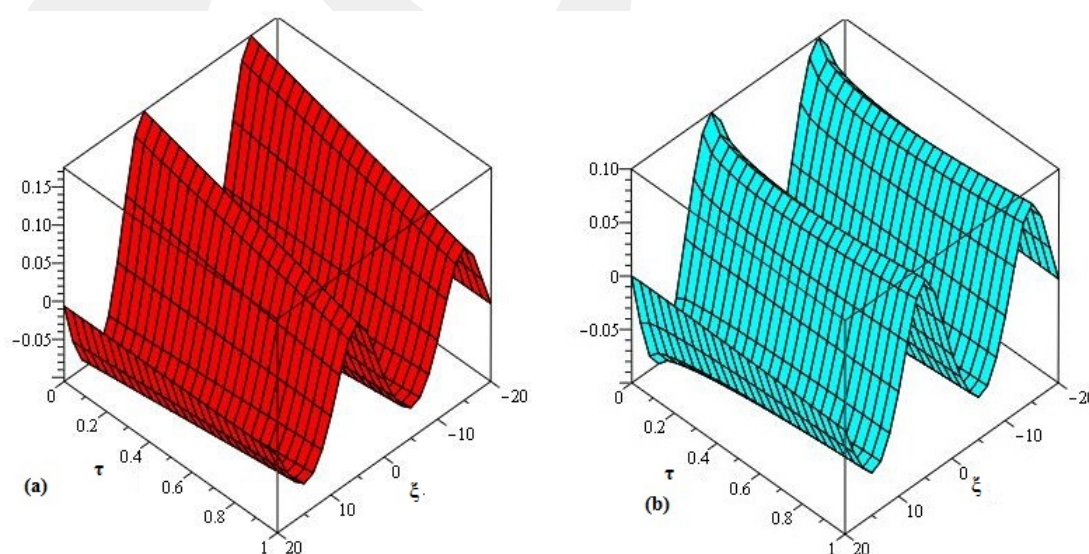
$$\begin{aligned}
u(x, t) = & u_0(x, t) + u_1(x, t) + u_2(x, t) + \dots, \\
u(x, t) = & \frac{1}{10} \sin\left(\frac{\pi x}{l}\right) + \left[ -\frac{\sin\left(\frac{\pi x}{l}\right) \pi^4}{10l^4} + \frac{\sin\left(\frac{\pi x}{l}\right) \pi^2}{10l^2} - \frac{a \cos\left(\frac{\pi x}{l}\right) \pi^3}{10l^3} \right. \\
& \left. + \frac{b \sin\left(\frac{\pi x}{l}\right)}{10l} + \frac{\sin^2\left(\frac{\pi x}{l}\right)}{50l} - \frac{\sin^3\left(\frac{\pi x}{l}\right)}{10000} \right] \frac{t^\beta}{\Gamma(\beta + 1)} \\
& + \frac{1}{100000l^8} \left[ -600\pi^2 l^6 \sin\left(\frac{\pi x}{l}\right) - 10000a^2 \pi^6 l^2 \sin\left(\frac{\pi x}{l}\right) - 3000a\pi^3 l^5 \cos^3\left(\frac{\pi x}{l}\right) \right. \\
& - 8400\pi^4 l^4 \cos^2\left(\frac{\pi x}{l}\right) \sin\left(\frac{\pi x}{l}\right) - 20000b\pi^4 l^4 \sin\left(\frac{\pi x}{l}\right) + 20000b\pi^2 l^6 \sin\left(\frac{\pi x}{l}\right) \\
& + 20000a\pi^7 l \cos\left(\frac{\pi x}{l}\right) - 20000\pi^5 l^3 \cos\left(\frac{\pi x}{l}\right) + 1200\pi^2 l^6 \sin\left(\frac{\pi x}{l}\right) \cos^2\left(\frac{\pi x}{l}\right) \\
& - 20000a\pi^3 l^5 b \cos\left(\frac{\pi x}{l}\right) - 20000a\pi^3 l^5 \cos\left(\frac{\pi x}{l}\right) \sin\left(\frac{\pi x}{l}\right) + 10000\pi^8 \sin\left(\frac{\pi x}{l}\right) \\
& - 100l^8 - 20000\pi^6 l^2 \sin\left(\frac{\pi x}{l}\right) + 36000\pi^4 l^4 \cos^2\left(\frac{\pi x}{l}\right) + 12400\pi^4 l^4 \sin\left(\frac{\pi x}{l}\right) \\
& - 12000\pi^2 l^6 \cos^2\left(\frac{\pi x}{l}\right) + 10000b^2 l^8 \sin\left(\frac{\pi x}{l}\right) + 2400a\pi^3 l^5 \cos\left(\frac{\pi x}{l}\right) + 803l^8 \sin\left(\frac{\pi x}{l}\right) \\
& - 20000\pi^4 l^4 + 6000bl^8 - 400bl^8 \sin\left(\frac{\pi x}{l}\right) + 8000\pi^2 l^6 + 200l^8 \cos^2\left(\frac{\pi x}{l}\right) \\
& - 100l^8 \cos^4\left(\frac{\pi x}{l}\right) - 6000bl^8 \cos^2\left(\frac{\pi x}{l}\right) - 806l^8 \sin\left(\frac{\pi x}{l}\right) \cos^2\left(\frac{\pi x}{l}\right) \\
& \left. + 3l^8 \sin\left(\frac{\pi x}{l}\right) \cos^4\left(\frac{\pi x}{l}\right) + 400bl^8 \sin\left(\frac{\pi x}{l}\right) \cos^2\left(\frac{\pi x}{l}\right) \right] \frac{t^{2\beta}}{\Gamma(2\beta + 1)} \dots
\end{aligned}$$

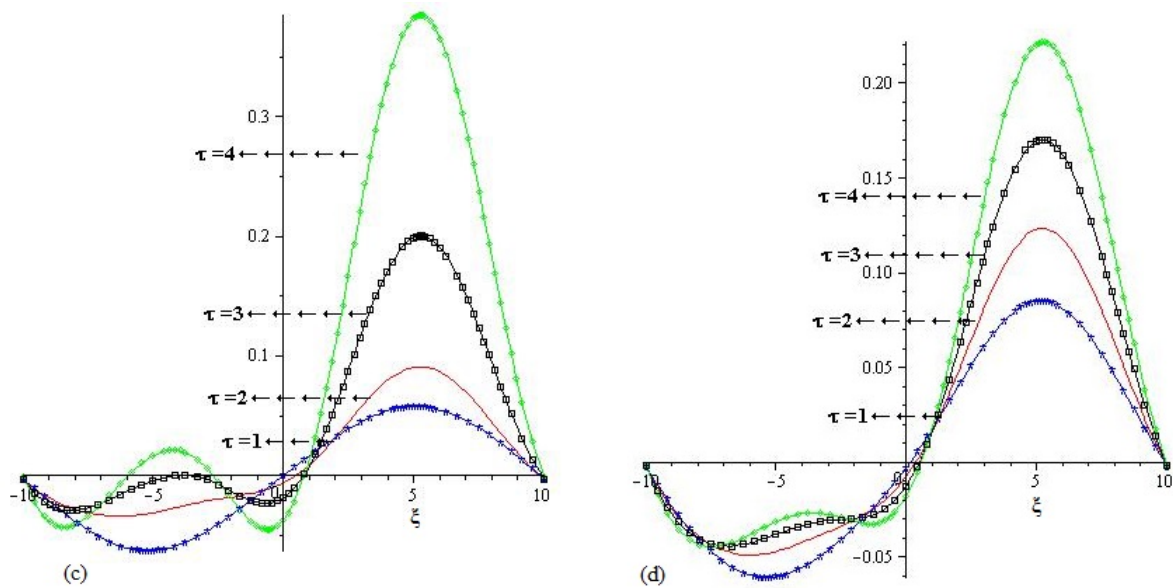
In Table 2, the solutions comparison of LADM and HPM is given at fractional orders  $\beta = 0.5$  and 1. It has been observed that LADM has the higher degree of accuracy as compare to HPM.

**Table 2.** Comparison of LADM and HPM of different fractional-order of  $\beta$ ,  $l = 10$  and  $t = 1$ .

$x$	HPM( $\beta = 0.5$ )	LADM( $\beta = 0.5$ )	HPM( $\beta = 1$ )	LADM( $\beta = 1$ )
0.25	0.00327554	0.00327554	0.0023907	0.0023907
0.50	0.01120703	0.01120703	0.0063240	0.0063240
0.75	0.01963618	0.01963618	0.0104008	0.0104008
1.00	0.02849853	0.02849853	0.0145955	0.0145955
1.25	0.03771459	0.03771459	0.0188774	0.0188774
1.50	0.04719094	0.04719094	0.0232104	0.0232104
1.75	0.05682173	0.05682173	0.0275542	0.0275542
2.00	0.06649076	0.06649076	0.0318643	0.0318643

In Figure 3, the LADM solutions at fractional orders  $\beta = 0.75$  and 1 are plotted. The graph (a) represent the solution of example 2 at  $\beta = 1$  while graph (b) is the plot of LADM solution at  $\beta = 0.75$ . In Figure 4, the LADM solutions at fractional orders  $\beta = 0.75$  and 1 are plotted at  $t = 1, 2, 3$  and 4 in the domain  $-10 < x < 10$ . The graphs (c) and (d) of Figure 4 represent the LADM solutions at fractional orders  $\beta = 1$  and 0.75 respectively.

**Figure 3.** LADM solution for example 2 of  $a = 1$ ,  $b = 0.5$  at (a)  $\beta = 1$  and (b)  $\beta = 0.75$ .



**Figure 4.** LADM solution for example 2 of  $a = 1$ ,  $b = 0.5$  and  $\tau = 1$  at (c)  $\beta = 1$  and (d)  $\beta = 0.5$ .

#### 4.3. Example

Consider the following non-linear S-H equation with dispersion

$$\frac{\partial^\beta u(x, t)}{\partial t^\beta} + (1 - r)u(x, t) + 2\frac{\partial^2 u(x, t)}{\partial x^2} + \frac{\partial^4 u(x, t)}{\partial x^4} - u^2(x, t) + \left(\frac{\partial u(x, t)}{\partial x}\right)^2 = 0, \quad 0 < \beta \leq 1 \quad (4.11)$$

with initial condition

$$u(x, 0) = e^x. \quad (4.12)$$

Taking Laplace transform of Eq (4.11),

$$\begin{aligned} \mathcal{L}\left[\frac{\partial^\beta u(x, t)}{\partial t^\beta}\right] &= -\mathcal{L}\left[(1 - r)u(x, t) + 2\frac{\partial^2 u(x, t)}{\partial x^2} + \frac{\partial^4 u(x, t)}{\partial x^4} - u^2(x, t) + \left(\frac{\partial u(x, t)}{\partial x}\right)^2\right], \\ s^\beta \mathcal{L}[u(x, t)] - s^{\beta-1}[u(x, 0)] &= -\mathcal{L}\left[(1 - r)u(x, t) + 2\frac{\partial^2 u(x, t)}{\partial x^2} + \frac{\partial^4 u(x, t)}{\partial x^4} \right. \\ &\quad \left. - u^2(x, t) + \left(\frac{\partial u(x, t)}{\partial x}\right)^2\right]. \end{aligned}$$

Using inverse transformation

$$\begin{aligned} u(x, t) &= \mathcal{L}^{-1}\left[\frac{u(x, 0)}{s} - \frac{1}{s^\beta} \mathcal{L}\left\{(1 - r)u(x, t) + 2\frac{\partial^2 u(x, t)}{\partial x^2} + \frac{\partial^4 u(x, t)}{\partial x^4} \right. \right. \\ &\quad \left. \left. - u^2(x, t) + \left(\frac{\partial u(x, t)}{\partial x}\right)^2\right\}\right], \end{aligned}$$

$$u(x, t) = e^x - \mathcal{L}^{-1} \left[ \frac{1}{s^\beta} \mathcal{L} \left\{ (1-r)u(x, t) + 2 \frac{\partial^2 u(x, t)}{\partial x^2} + \frac{\partial^4 u(x, t)}{\partial x^4} - u^2(x, t) + \left( \frac{\partial u(x, t)}{\partial x} \right)^2 \right\} \right],$$

Using ADM procedure, we get

$$\sum_{j=0}^{\infty} u_j(x, t) = e^x - \mathcal{L}^{-1} \left[ \frac{1}{s^\beta} \mathcal{L} \left\{ (1-r) \sum_{j=0}^{\infty} u_j(x, t) + 2 \sum_{j=0}^{\infty} \frac{\partial^2 u_j(x, t)}{\partial x^2} + \sum_{j=0}^{\infty} \frac{\partial^4 u_j(x, t)}{\partial x^4} - \sum_{j=0}^{\infty} A_j + \sum_{j=0}^{\infty} B_j \right\} \right],$$

$$u_0(x, t) = e^x, \quad (4.13)$$

$$\sum_{j=1}^{\infty} u_j(x, t) = - \mathcal{L}^{-1} \left[ \frac{1}{s^\beta} \mathcal{L} \left\{ (1-r) \sum_{j=0}^{\infty} u_j(x, t) + 2 \sum_{j=0}^{\infty} \frac{\partial^2 u_j(x, t)}{\partial x^2} + \sum_{j=0}^{\infty} \frac{\partial^4 u_j(x, t)}{\partial x^4} - \sum_{j=0}^{\infty} A_j + \sum_{j=0}^{\infty} B_j \right\} \right], \quad (4.14)$$

where the nonlinear terms in the above equations are represented by Adomian polynomials  $A_j$  and  $B_j$  [41]. Whose components are defined as

$$A_j = \frac{1}{j!} \left[ \frac{d^j}{d\lambda^j} \left\{ N \left( \sum_{j=0}^{\infty} (\lambda^j u_j) \right) \right\} \right]_{\lambda=0}, \quad B_j = \frac{1}{j!} \left[ \frac{d^j}{d\lambda^j} \left\{ N_1 \left( \sum_{j=0}^{\infty} (\lambda^j u_j) \right) \right\} \right]_{\lambda=0}, \quad j = 0, 1, 2, \dots,$$

Here the nonlinear term is

$$N(u) = u^2, \quad N_1(u) = (u_x)^2. \quad (4.15)$$

For  $j = 0$

$$A_0 = N(\lambda^0 u_0), \quad B_0 = N_1(\lambda^0 u_0), \\ A_0 = N(u_0), \quad B_0 = N_1(u_0).$$

Using Eq (4.15)

$$A_0 = u_0^2, \quad B_0 = (u_{0x})^2,$$

$j = 1$

$$A_1 = \frac{1}{1!} \left[ \frac{d}{d\lambda} \left\{ N(\lambda^0 u_0 + \lambda^1 u_1) \right\} \right]_{\lambda=0}, \quad B_1 = \frac{1}{1!} \left[ \frac{d}{d\lambda} \left\{ N_1(\lambda^0 u_0 + \lambda^1 u_1) \right\} \right]_{\lambda=0}, \\ A_1 = \left[ \frac{d}{d\lambda} \left\{ N(u_0 + \lambda u_1) \right\} \right]_{\lambda=0}, \quad B_1 = \left[ \frac{d}{d\lambda} \left\{ N_1(u_0 + \lambda u_1) \right\} \right]_{\lambda=0}, \\ A_1 = \left[ \frac{d}{d\lambda} \left\{ (u_0 + \lambda u_1)^2 \right\} \right]_{\lambda=0}, \quad B_1 = \left[ \frac{d}{d\lambda} \left\{ (u_{0x} + \lambda u_{1x})^2 \right\} \right]_{\lambda=0}, \\ A_1 = 2[(u_0 + \lambda u_1)u_1]_{\lambda=0}, \quad B_1 = 2[(u_{0x} + \lambda u_{1x})u_{1x}]_{\lambda=0},$$

$$A_1 = 2u_0u_1, \quad B_1 = 2(u_{0x}u_{1x}).$$

Similarly

$$A_2 = u_0u_1 + u_0u_1, \quad B_2 = (u_0u_2)_x + (u_0u_1)_x.$$

For  $j = 1$

$$u_1(x, t) = -\mathcal{L}^{-1} \left[ \frac{1}{s^\beta} \mathcal{L} \left\{ (1-r)u_0(x, t) + 2 \frac{\partial^2 u_0(x, t)}{\partial x^2} + \frac{\partial^4 u_0(x, t)}{\partial x^4} - A_0 + B_0 \right\} \right],$$

$$u_1(x, t) = (r-4)e^x \frac{t^\beta}{\Gamma(\beta+1)}.$$

For  $j = 2$

$$u_2(x, t) = -\mathcal{L}^{-1} \left[ \frac{1}{s^\beta} \mathcal{L} \left\{ (1-r)u_1(x, t) + 2 \frac{\partial^2 u_1(x, t)}{\partial x^2} + \frac{\partial^4 u_1(x, t)}{\partial x^4} - A_1 + B_1 \right\} \right],$$

$$u_2(x, t) = (r-4)e^x \frac{t^{2\beta}}{\Gamma(2\beta+1)}.$$

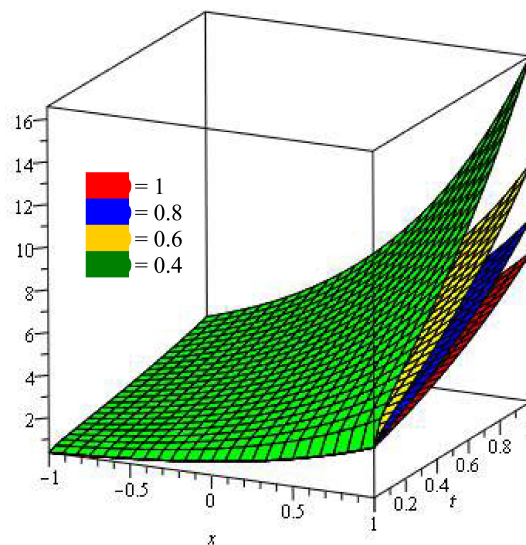
⋮

The LADM solution for example 3 is

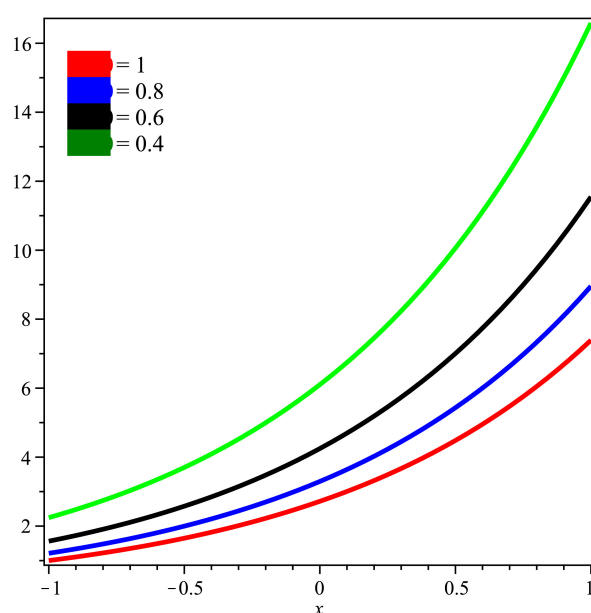
$$u(x, t) = u_0(x, t) + u_1(x, t) + u_2(x, t) + \cdots + u_n(x, t).$$

$$u(x, t) = e^x + (r-4)e^x \frac{t^\beta}{\Gamma(\beta+1)} + (r-4)e^x \frac{t^{2\beta}}{\Gamma(2\beta+1)} + \cdots + (r-4)e^x \sum_{n=3}^{\infty} \frac{t^{n\beta}}{\Gamma(n\beta+1)}. \quad (4.16)$$

In Figure 5, the LADM solutions of 3D graph at different fractional-orders  $\beta = 1, 0.8, 0.6$  and  $0.4$  are plotted. In Figure 6, the LADM solutions graph of 2D at different fractional-orders  $\beta = 1, 0.8, 0.6$  and  $0.4$  are plotted at  $t = 1$  in the domain  $-1 < x < 1$ .



**Figure 5.** The LADM solution graph of different fractional-order of example 1.



**Figure 6.** The LADM solution graph of 2D plot of different fractional-order of example 1.

## 5. Conclusions

In this research paper, the Laplace-Adomian decomposition method is found to be a simple and effective technique to solve the Swift-Hohenberg equations of fractional-order. The implementation of the proposed method has been done for some numerical examples of Swift-Hohenberg equations. The solution of these examples are in good contact with other analytical techniques such as the variational iteration method and the homotopy perturbation method. The present method has simple, accurate and straightforward implementation to solve fractional-order Swift-Hohenberg equations. It is also investigated that the proposed method has simple procedure and required a small volume of calculations as compared to other analytical methods. In conclusion, the suggested approach is considered to be a sophisticated tool for the solution of other fractional-order differential equations.

## Conflict of interest

The authors declare no conflict of interest.

## Authors contributions

Conceptualization, H.K. and R.S.; Methodology, H.K.; Software, R.S.; Validation, J.X. and D.B.; Formal Analysis, A.A.; Investigation, H.K. J.X. and D.B.; Resources, H.K. and S.A.; Writing-Original Draft Preparation, R.S.; Writing-Review and Editing, H.K. and D.B; Visualization, J.X.; Supervision, D.B.; Project Administration, A.A, Funding, J.X.

## Acknowledgements

Natural Science Foundation of Neijiang Normal University (No.14ZB06).

The authors extend their appreciation to the Deanship of Scientific Research at King Khalid University, Saudi Arabia for founding this work through Research Groups program under grant number (R.G.P2./99/41).

## References

1. K. B. Oldham, J. Spanier, *The Fractional Calculus*, vol. 111 of Mathematics in science and engineering, 1974.
2. A. A. A. Kilbas, H. M. Srivastava, J. J. Trujillo, *Theory and applications of fractional differential equations*, Elsevier Science Limited, **204** (2006).
3. K. S. Miller, B. Ross, *An introduction to the fractional calculus and fractional differential equations*, Wiley, 1993.
4. M. Caputo, Linear models of dissipation whose Q is almost frequency independent-II, *Geophys. J. Int.*, **13** (1967), 529–539.
5. F. Yin, J. Song, X. Cao, A general iteration formula of VIM for fractional heat-and wave-like equations, *J. Appl. Math.*, 2013.
6. A. S. Arife, S. K. Vanani, F. Soleymani, The Laplace homotopy analysis method for solving a general fractional diffusion equation arising in nano-hydrodynamics, *J. Comput. Theor. Nanosci.*, **10** (2013), 33–36.
7. K. Oldham, J. Spanier, *The fractional calculus theory and applications of differentiation and integration to arbitrary order*, Elsevier, 1974.
8. R. Shah, H. Khan, S. Mustafa, P. Kumam, M. Arif, Analytical solutions of fractional-order diffusion equations by natural transform decomposition method, *Entropy*, **21** (2019), 557.
9. N. H. Sweilam, A. A. Elaziz El-Sayed, S. Boulaaras, Fractional-order advection-dispersion problem solution via the spectral collocation method and the non-standard finite difference technique, *Chaos, Solitons Fractals*, **144** (2021), 110736.
10. A. J. Munoz-Vzquez, J. D. Snchez-Torres, M. Defoort, S. Boulaaras, Predefined-time convergence in fractional-order systems, *Chaos, Solitons Fractals*, **143** (2021), 110571.
11. R. Guefaifia, S. M. Boulaaras, B. Cherif, T. Radwan, Infinite Existence Solutions of Fractional Systems with Lipschitz Nonlinearity, *J. Function Spaces*, **2020** (2020).
12. O. A. Arqub, Fitted reproducing kernel Hilbert space method for the solutions of some certain classes of time-fractional partial differential equations subject to initial and Neumann boundary conditions, *Comput. Math. Appl.*, **73** (2017), 1243–1261.
13. O. A. Arqub, Numerical solutions for the Robin time-fractional partial differential equations of heat and fluid flows based on the reproducing kernel algorithm, *Int. J. Numer. Methods Heat Fluid Flow*, 2018.

14. O. A. Arqub, Z. Odibat, M. Al-Smadi, Numerical solutions of time-fractional partial integrodifferential equations of Robin functions types in Hilbert space with error bounds and error estimates, *Nonlinear Dynam.*, **94** (2018), 1819–1834.
15. N. Mehmood, N. Ahmad, Existence results for fractional order boundary value problem with nonlocal non-separated type multi-point integral boundary conditions, *AIMS Math.*, **5** (2019), 385–398.
16. H. K. Nashine, R. W. Ibrahim, Solvability of a fractional Cauchy problem based on modified fixed point results of non-compactness measures, *AIMS Math.*, **4** (2019), 847–859.
17. S. Bushnaq, S. Ali, K. Shah, M. Arif, Approximate solutions to nonlinear fractional order partial differential equations arising in ion-acoustic waves, *AIMS Math.*, **4** (2019), 721–739.
18. Y. Chu, M. MA. Khater, Y. S. Hamed, Diverse novel analytical and semi-analytical wave solutions of the generalized (2+1)-dimensional shallow water waves model, *AIP Advances*, **11** (2021), 015223.
19. M. Khater, U. Ali, M. A. Khan, A. A. Mousa, R. A. M. Attia, A new numerical approach for solving 1D Fractional diffusion-wave equation, *J. Function Spaces*, **2021** (2021).
20. M. M. A. Khater, R. A. M. Attia, C. Park, D. Lu, On the numerical investigation of the interaction in plasma between (high & low) frequency of (Langmuir & ion-acoustic) waves, *Results Physics*, **18** (2020), 103317.
21. G. Adomian, Solving frontier problems of physics: The decomposition method, With a preface by Yves Cherruault, Fundamental Theories of Physics, Kluwer Academic Publishers Group, Dordrecht, **1** (1994).
22. S. A. Khuri, A Laplace decomposition algorithm applied to a class of nonlinear differential equations, *J. Appl. Math.*, **1** (2001), 141–155.
23. A. Ali, K. Shah, R. A. Khan, Numerical treatment for traveling wave solutions of fractional Whitham-Broer-Kaup equations, *Alex. Eng. J.*, **57** (2018), 1991–1998.
24. R. Shah, H. Khan, M. Arif, P. Kumam, Application of LaplaceAdomian decomposition method for the analytical solution of third-order dispersive fractional partial differential equations, *Entropy*, **21** (2019), 335.
25. H. Khan, R. Shah, P. Kumam, D. Baleanu, M. Arif, An efficient analytical technique, for the solution of fractional-order telegraph equations, *Mathematics*, **7** (2019), 426.
26. A. Ali, L. Humaira, K. Shah, Analytical solution of general fishers equation by using Laplace Adomian decomposition method, *J. Pure Appl. Math.*, **2** (2018), 1–4.
27. S. Mahmood, R. Shah, M. Arif, Laplace adomian decomposition method for multi dimensional time fractional model of Navier-Stokes equation, *Symmetry*, **11** (2019), 149.
28. F. Haq, K. Shah, Q. M. Al-Mdallal, F. Jarad, Application of a hybrid method for systems of fractional order partial differential equations arising in the model of the one-dimensional Keller-Segel equation, *Eur. Phys. J. Plus*, **134** (2019), 1–11.
29. F. T. Akyildiz, D. A. Siginer, K. Vajravelu, R. A. V. Gorder, Analytical and numerical results for the Swift Hohenberg equation, *Appl. Math. Comput.*, **216** (2010), 221–226.

30. J. Lega, J. V. Moloney, A. C. Newell, Swift-Hohenberg equation for lasers, *Phys. Rev. Lett.*, **73** (1994), 2978.
31. H. Sakaguchi, H. R. Brand, Localized patterns for the quintic complex Swift-Hohenberg equation, *Physica D: Nonlinear Phenomena*, **117** (1998), 95–105.
32. P. C. Hohenberg, J. B. Swift, Effects of additive noise at the onset of Rayleigh-Bnard convection, *Phys. Rev. A*, **46** (1992), 4773.
33. K. Vishal, S. Das, S. H. Ong, P. Ghosh, On the solutions of fractional Swift Hohenberg equation with dispersion, *Appl. Math. Comput.*, **219** (2013), 5792–5801.
34. K. Vishal, S. Kumar, S. Das, Application of homotopy analysis method for fractional Swift Hohenberg equation revisited, *Appl. Math. Model.*, **36** (2012), 3630–3637.
35. M. Merdan, A numeric analytic method for time-fractional Swift Hohenberg (SH) equation with modified Riemann Liouville derivative, *Appl. Math. Model.*, **37** (2013), 4224–4231.
36. N. A. Khan, N. U. Khan, M. Ayaz, A. Mahmood, Analytical methods for solving the time-fractional Swift Hohenberg (SH) equation, *Comput. Math. Appl.* **61** (2011), 2182–2185.
37. S. McCalla, B. Sandstede, Snaking of radial solutions of the multi-dimensional Swift Hohenberg equation: A numerical study, *Physica D: Nonlinear Phenomena*, **239** (2010), 1581–1592.
38. N. A. Kudryashov, D. I. Sinelshchikov, Exact solutions of the Swift Hohenberg equation with dispersion, *Commun. Nonlinear Sci.*, **17** (2012), 26–34.
39. W. Li, Y. Pang, An iterative method for time-fractional Swift-Hohenberg equation, *Adv. Math. Phys.*, **2018** (2018).
40. P. Bakhtiari, S. Abbasbandy, R. A. V. Gorder, Reproducing kernel method for the numerical solution of the 1D Swift Hohenberg equation, *Appl. Math. Comput.*, **339** (2018), 132–143.
41. A. M. Wazwaz, A reliable modification of Adomian decomposition method, *Appl. Math. Comput.*, **102** (1999), 77–86.



AIMS Press

©2021 the Author(s), licensee AIMS Press. This is an open access article distributed under the terms of the Creative Commons Attribution License (<http://creativecommons.org/licenses/by/4.0>)